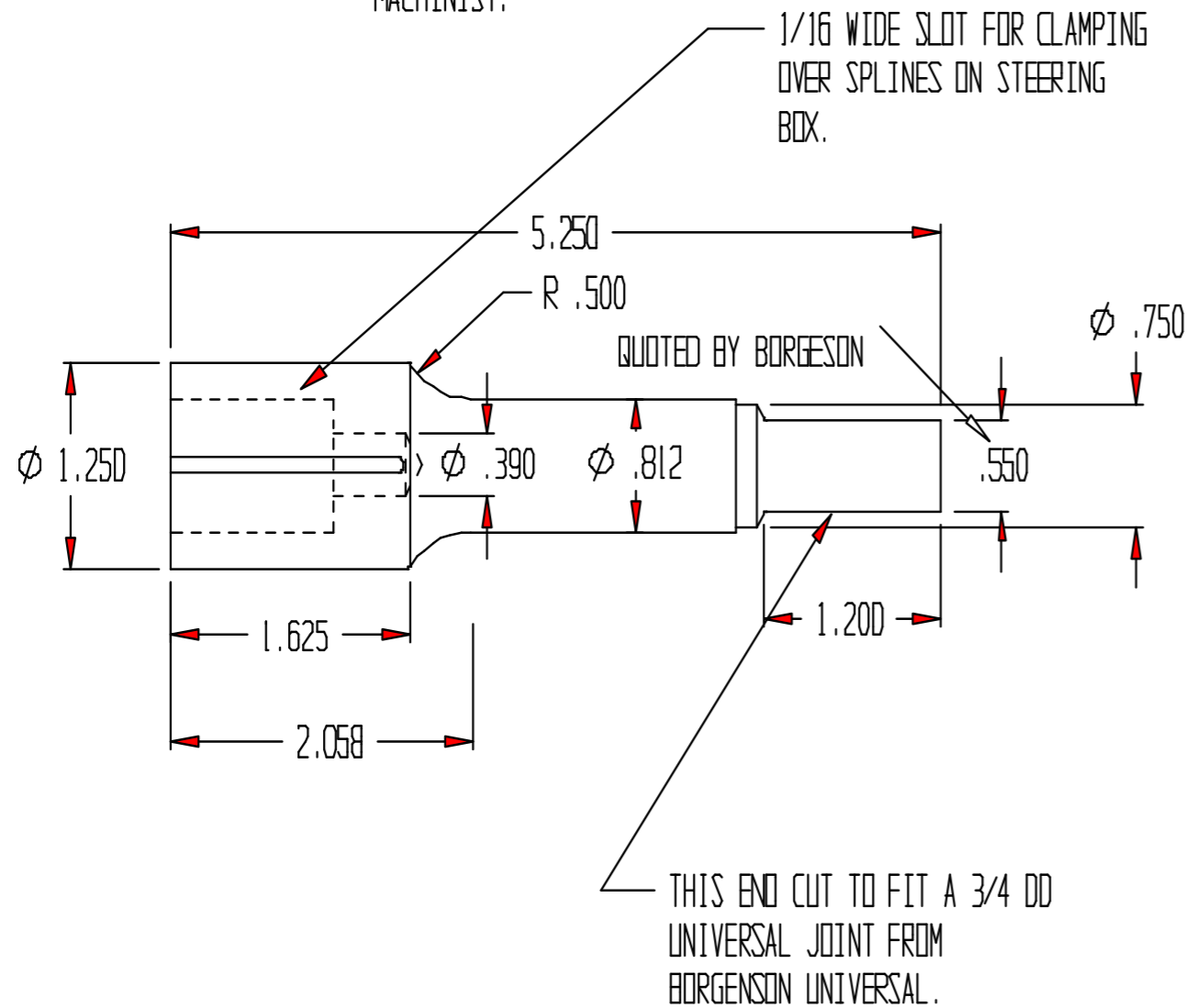
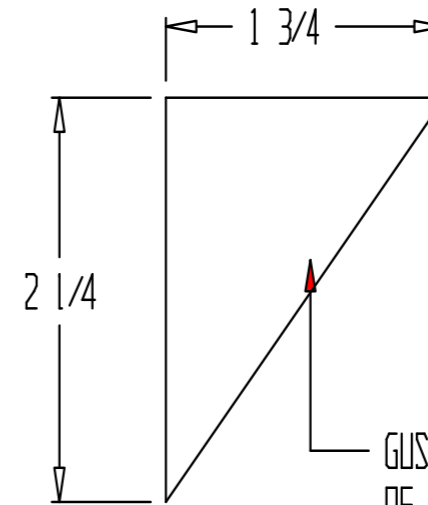


SPLID SHAFT

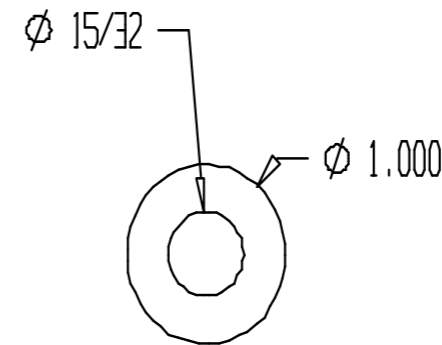
THIS PART IS BETTER OFF BOUGHT FROM ADVANCE ADAPTERS UNLESS YOU'RE A VERY EXPERIENCED MACHINIST.



THE INTERNAL SPLINES ON MY SHAFT WERE NOT BROACHED THEY WERE EDM'ED, WHICH IS DONE BY ELECTRICALLY ERODING THE STEEL AWAY, ITS MUCH MORE PRECISION THAN BROACHING.



GUSSET: WELD BETWEEN BOTTOM OF FRAME AND BACK OF MOUNTING PLATE. USE 1/4" - 1/2" PLATE STOCK.



SPACER (2 REQ'D) THESE GO BETWEEN THE FRAME AND THE ENCLOSURE FOR SUPPORT TO KEEP FROM COLLAPSING THE FRAME WHEN THE BOX IS BOLTED UP.

